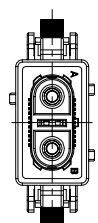
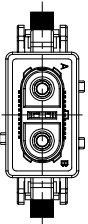
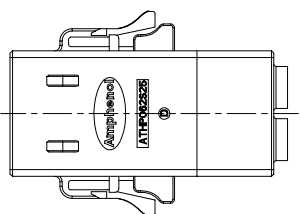
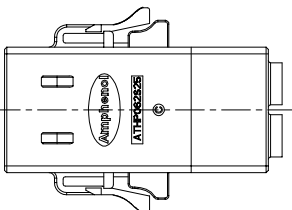
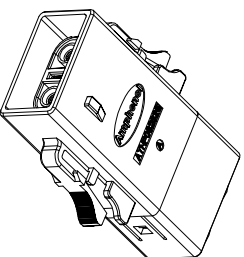
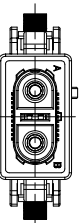
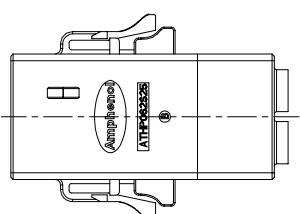
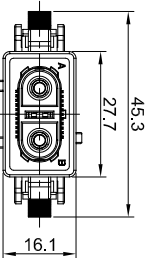
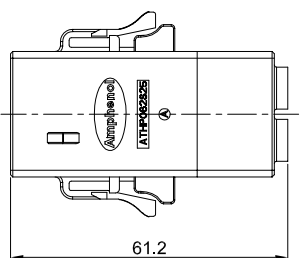
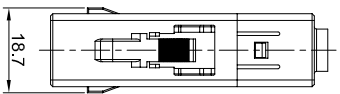


REVISIONS					
REV	ECO	DESCRIPTION	DATE	BY	APPR
A1	-	FIRST RELEASE	May/22/17	Regan	Tommy
A2	-	MODIFY THE CURRENT RATING	Jul/10/17	White	Tommy

**NOTES: UNLESS OTHERWISE SPECIFIED**

- MATERIAL:**
  - 1.1 HOUSING: THERMOPLASTIC UL 94V0
  - 1.2 SEAL: SILICONE RUBBER
  - 1.3 POWER CONTACT: COPPER ALLOY, Tin PLATED
  - 1.4 SHIELDING: COPPER ALLOY, NICKLE PLATED
- SPECIFICATIONS:**
  - 2.1 CURRENT RATING: 6.0mm2 ( MS10B23XX ) @35 AMPS  
4.0mm<sup>2</sup> ( SS12A1XX-10 ) @25 AMPS  
2.5mm<sup>2</sup> ( SS12A1XX ) @20 AMPS  
"XX" DENOTES DIFFERENT PLATING.
  - 2.2 VOLTAGE RATING: 1000 V AC/DC
  - 2.3 OPERATING TEMPERATURE: 40°C TO +130°C
  - 2.4 DIELECTRIC WITHSTANDING VOLTAGE: LESS THAN 2 MILLAMPS CURRENT LEAKAGE @ 3000 VOLTS AC.
  - 2.5 INSULATION RESISTANCE: 500 MEGOHMS MIN@25±5°C.
  - 2.6 DEGREE OF PROTECTION: IP67 (MATED CONDITION)
  - 2.7 MATING CYCLE DURABILITY: 100 CYCLES
  - 2.8 RoHS COMPLIANT
- ALL DIMENSIONS ARE FOR REFERENCE USE ONLY.**



PART NUMBER	Key type	Cable OD Range
ATHP062S25EEL-S1	A Key	
ATHP062S25EEL-B-S1	B Key	6.5-7.5 mm
ATHP062S25EEL-C-S1	C Key	
ATHP062S25EELD-S1	D Key	
ATHP062S25EEL-S2	A Key	
ATHP062S25EEL-B-S2	B Key	4.8-5.8 mm
ATHP062S25EEL-C-S2	C Key	
ATHP062S25EELD-S2	D Key	

QUANTITY	PART NUMBER	DESCRIPTION	ITEM
<b>MATERIALS LIST</b>			

UNLESS OTHERWISE SPECIFIED			
1) All dimensions are in millimeters.	DRAWN:	DATE:	
2) Tolerances are as follows:	DATE:	DATE:	
1 Pt. DEC 0.30	10/17	10/17	
3 Pt. DEC 0.10	10/17	10/17	
3) Note reference =	ENGINEER:	APPROVAL:	
	Tommy	Jul/10/17	
MATERIAL SPECIFICATIONS:			
CUSTOMER: Tommy			
THIS DRAWING IS SUPERSEDED BY THE LATEST REVISIONS. SPECIFICATIONS AND PERFORMANCE DATA ARE THE PROPERTY OF AMPHENOL CORPORATION. NO PARTS OF REPRODUCTION ARE PERMITTED. ALL MANUFACTURING VARIATIONS NORMAL.			
PROCESS SPECIFICATIONS:			
NEXT ASST:			

SCALE	TYPE	SIZE	REV	DATE	BY	APPR
NONE	B	C-	ATHP062S25EEL-X-SX	Jul/10/17	Regan	Tommy
					White	Tommy

**Amphenol**  
 Site Systems - www.amphenol-site.com  
 44724 Morley Drive  
 Clinton Township, MI 48036

ATHP - PLUG, 2 PIN,  
 HVIL WITH EMC SHIELDING